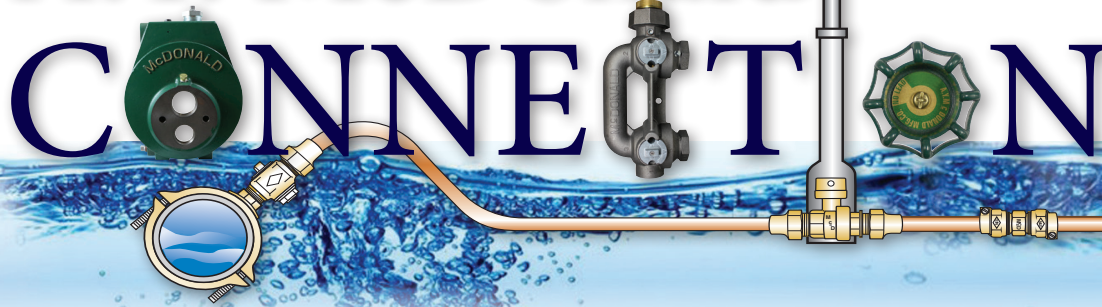


# A.Y. McDonald



Winter 2024



Chief Executive Officer -  
A.Y. McDonald Mfg. Co.

## More Than Just A.Y. McDonald

by Rob McDonald

When most of you think of A.Y. McDonald, you may think about corporation stops, meter setters, natural gas valves, or meter bypass bars. But there's a lot more to A.Y. McDonald than just that!

A.Y. McDonald is a family of companies. We supply products to the water, wastewater, natural gas, and propane industries from our five companies. Besides A.Y. McDonald, our family of companies include:

- **Cambridge Brass** – Water Works Brass
- **Chicago Fittings** – Risers and Fittings for the Natural Gas and Propane Industries
- **Val-Matic Valve & Mfg.** – Small and Large Valves (Air Release, Check, Ball, Butterfly, Plug) for the Water and Wastewater industries
- **JCM Industries** – Pipe Fittings and Fabrications for the Repair, Connection, and Branching of all types of Pipes, Large and Small.

These family of companies were acquired by the McDonald family over the last 20 years. All of these companies were family businesses themselves, either when they joined A.Y. McDonald or at some point in their long histories.

A.Y. McDonald is proud of the line-up of strong brands we have to offer our customer, The Boss! For information on any of these companies and product lines, talk to your A.Y. McDonald salesperson or look us up on any of our websites.

Wishing all a healthy and prosperous New Year!

## A.Y. McDonald Family



A.Y. McDonald Mfg. Co.  
4800 Chavenelle Road  
Dubuque, IA 52002  
1-800-AY-CARES  
sales@aymcdonald.com  
aymcdonald.com  
aymcdonald.com



Cambridge Brass  
140 Orion Place  
Cambridge, Ontario N1T 1R9  
[TF Canada] 800.265.6638  
[TF USA] 800.724.3906  
cambridgebrass.com  
cambridgebrassu.com  
cbsales@cbrass.com



Chicago Fittings  
3170 E Colley Rd.  
Beloit, WI 53511  
608.299.8900  
chicagofittings.com



Val-Matic  
905 Riverside Drive  
Elmhurst, IL 60126  
630.941.7600  
valves@valmatic.com  
valmatic.com



JCM Industries  
200 Old Boston Rd  
Nash, TX 75569  
800.527.8482  
sales@jcmindustries.com  
jcmindustries



# Innovation

## Innovation News



### Share Your Ideas with Our Innovation Team



**Kelly Breitbach**  
Innovation Product Manager  
A.Y. McDonald Mfg. Co.

It is no secret that A.Y. McDonald's innovation department was created to make your life easier. Allowing customers to guide our innovation strategy and the projects we tackle also allows A.Y. McDonald to contribute new solutions to the market that truly make a difference. If you have a pain point you want solved or an idea you want to see come to life, share them with Kelly Breitbach, our Innovation Product Manager, by emailing [innovations@aymcdonald.com](mailto:innovations@aymcdonald.com). All suggestions are funneled through our process and will be reviewed, ranked, and prioritized!

# INNOVATION



## Come See Us in Person at an Upcoming Show!

A.Y. McDonald may be coming to a town near you. We like to share any upcoming conferences our experts will be attending from all over the country. Visit the trade shows section of our website to view this frequently updated list of events. <https://aymcdonald.com/post/ay-mcdonald-tradeshows>

Joint Expo (Michigan Section AWWA & Michigan Water Environment Association) - Lansing, MI	2/4 - 2/5	MRWA (Michigan Rural Water Association) Annual Conference - Traverse City, MI	3/18 - 3/20
Montana Water Well - Helena, MT	2/5 - 2/7	Wisconsin Rural Water - Green Bay, WI	3/25 - 3/27
Illinois Rural Water - Effingham, IL	2/18 - 2/20	Kansas Rural Water Association Annual Conference - Wichita, KS	3/25 - 3/27
MGWA (Michigan Ground Water Association) Annual Education & Trade Show - Frankenmuth, MI	2/18 - 2/19	RWAAZ Spring 2025 Conference - Tucson, AZ	3/26 - 3/27
50th Annual Iowa Rural Water Conference - Kearney, NE	2/10 - 2/12	NATURAL GAS: Southern Gas Association (SGA) Show - Charlotte, NC	TBD
Evergreen Rural Water of Washington (ERWOW) Annual Conference and Trade Show - Tulalip, WA	2/11 - 2/13	Watercon - Springfield, IL	4/14 - 4/16
Mountain States Ground Water Show - Laughlin, NV	2/12 - 2/14	AZ Water 98th Annual Conference - Phoenix, AZ	4/15 - 4/17
Oregon Association of Water Utilities (OWAU) 47th Annual Management & Technical Conference - Runriver, OR	3/3 - 3/7	Indiana Section AWWA Annual Conference - Indianapolis, IN	4/21 - 4/23
Missouri Rural Water Association Annual Conference - Branson, MO	3/4 - 3/6	Oklahoma Rural Water Annual Conference - Tulsa, OK	4/23 - 4/25
Minnesota Rural Water Association 41st Annual Water and Wastewater Technical Conference - St. Cloud, MN	3/4 - 3/6	AWWA Expo - Hot Springs, AR	4/27 - 4/30
Nebraska Rural Water Association Annual Conference - Kearney, NE	3/10 - 3/12	California Rural Water Show - South Lake Tahoe, CA	4/28 - 5/1
Alliance of Indiana Rural Water Spring Conference - French Lick, IN	3/11 - 3/13	NATURAL GAS: American Gas Association (AGA) Show - Aurora, CO	5/5 - 5/8
Montana Rural Water - Great Falls, MT	3/12 - 3/14	AWWA Pacific NW 2025 Section Conference - Boise, ID	5/7 - 5/9
Colorado Rural Water	3/17 - 3/19	Mississippi Rural Water Expo - Jackson, MS	May
American Water Works Association (AWWA) - Houston, TX	3/17 - 3/21	NATURAL GAS: National Gas Association (NGA) Show - Rhode Island, MA	TBD
		Southern Wholesalers Annual Meeting - Sandestin Beach, FL	6/29 - 7/1
		Louisiana Rural Water Expo - Lake Charles, LA	7/13 - 7/17





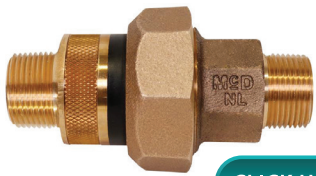
### Industry News

## Finding Lead Water Pipes: New NRDC Map Shows the Hot Spots in Every State

A new map, based on EPA (Environmental Protection Agency) data, highlights the U.S. lead pipe crisis, revealing approximately 9.2 million lead service lines across all 50 states. High concentrations are found in cities like Chicago, Cleveland, and New York, while many areas lack material data for pipes. The EPA is allocating \$15 billion in federal funds for lead pipe replacement, prioritizing the hardest-hit communities.



### New Products



[CLICK HERE](#)

## **NEW** Insulated Service Fittings

A.Y. McDonald's new insulated service fittings address stray electrical currents in water service lines, preventing corrosion and shock hazards. These robust, no-lead brass fittings combine a dielectric union and insulator, featuring a durable nylon insulator, EPDM O-rings, and compliance with ANSI/AWWA C800 standards. Offered as couplings and adapters in various connection types, they maintain system pressure and simplify installation.

### Featured Videos

## How to Install the 2" RANGER Fitting

Life just got easier. When you don't know what fitting is stocked on your shelf or don't have room to stock multiple fittings, you only need one: the RANGER™. In this video, Water Works Product Manager, Jim Francois, demonstrates the step-by-step process of installing the innovative 2" RANGER coupling.



[YouTube](#)  
[CLICK HERE](#)

## A.Y. McDonald: From the Main to Your Community

Water is essential to daily life, and we're committed to making sure it flows seamlessly from the water main to your home. This video highlights the comprehensive range of water works products we offer throughout the water service lateral.



[YouTube](#)  
[CLICK HERE](#)

### Blog



**TITAN**  
SWING CONNECT



## Meet TITAN™ Swing Connect Saddle

A.Y. McDonald's TITAN™ Swing Connect Saddle includes a pre-attached, pivoting TITAN™ bolt featuring a plastic breakaway head to prevent over-torquing. Its machined slot ensures easy, precise alignment, eliminating cross-threading and simplifying installation. Designed for efficiency, the saddle snaps onto water mains, and the bolt tightens securely until the torque-limiting head breaks off at 9-11 ft-lbs.

[CLICK HERE](#)





### Industry News

#### 'American Plumber Stories' Continues Mission of Highlighting Plumbing as a Career Choice

"American Plumber Stories," a YouTube docuseries launched by Pfister, aims to inspire the next generation to pursue plumbing careers. The show has gained industry-wide support and expanded globally in its fifth season. Featuring diverse plumbing professionals, including those in remote locations and all-female teams, the series highlights the trade's significance. Future plans include a roadshow to engage middle school students in plumbing careers.



[CLICK HERE](#)

### New Products

#### **NEW** Carbon Steel Press Fittings for Gas

A.Y. McDonald is happy to announce the addition of Carbon Steel Press Fittings to the Plumbing line. These fittings can be applied to Schedule 10 to 40 steel pipe as defined by ASTM A53, A106, A135, and A795 standards. They come with a Hydrogenated Nitrile Butadiene Rubber (HNBR) sealing element for Gas and Fuel Oils applications.

[CLICK HERE](#)



#### **NEW** No-Lead Pressure Reducing Valves 72602PPC

A.Y. McDonald's new no-lead 72602PPC 1" pressure reducing valves are designed to protect a water supply system and its components by reducing water pressure to a reasonable and safe level. This product is factory preset at 50 PSI outlet pressure, can be installed vertically or horizontally, and includes an integral strainer.

[CLICK HERE](#)



#### **NEW** Stainless-Steel Insert Fittings

A.Y. McDonald has expanded the Stainless-Steel Insert Fittings line to offer even more options. These fittings offer superior corrosion resistance and are designed to connect flexible (polyethylene) plastic pipe effortlessly. To ensure a seamless and secure pipe to pipe connection, hose clamps (sold separately) should be used with barbed connections.

[CLICK HERE](#)



### Blog

#### The Essential Role of Gas Valves in Household Plumbing Systems

Plumbing gas valves include household applications used to regulate gas in stoves, furnaces, and other appliances. Ball and plug valves are two common gas valve designs. A.Y. McDonald's plumbing line includes multiple ball and plug plumbing gas valve product options to choose from.

[CLICK HERE](#)





### Industry News

## U.S. Natural Gas Market on Cusp of Another Cycle of Demand Growth

The U.S. natural gas market is set for long-term growth, driven by rising LNG (Liquefied Natural Gas) exports and increased electricity demand from manufacturing, data centers, and electrification. While storage remains above average due to mild weather, inventories are expected to normalize by 2025. Production faces challenges from pipeline constraints and maturing shale basins, yet modest growth is projected. LNG export capacity is anticipated to grow 85% over five years, solidifying natural gas as a key energy source amid renewable integration.

[CLICK HERE](#)



### New Product

## **NEW** Chicago Fittings Risers and Accessories

A.Y. McDonald's Chicago Fittings products offer solutions for specialty joining methods for natural gas and propane markets. Their product offering includes risers and fittings. Until recently, these items were only sold through A.Y. McDonald's plumbing product line. In August, the Chicago Fittings' new Rigid Riser was also added to our natural gas product line, with access to other Chicago Fittings products as well. The other two items that can also be used in the utility market are the Rigid Flex (coming soon!) and the Semi-Rigid X-Riser. .

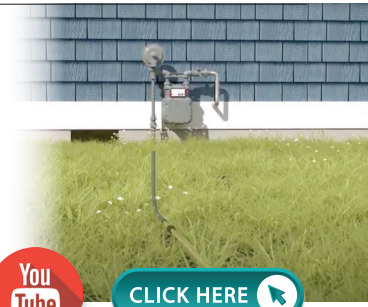


[CLICK HERE](#)

### New Videos

## Meet the Rigid Riser – Before Meter

Designed for durability and convenience, the Rigid Riser has a solid carbon steel casing to protect your gas line from any above-ground damage, and makes installations a breeze, saving you time and effort on every project. This video highlights the application and features surrounding this solution.



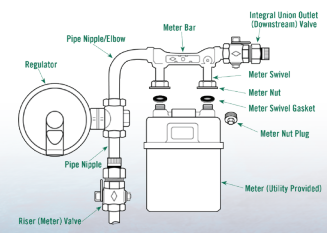
[CLICK HERE](#)



[CLICK HERE](#)

## Rise to Any Challenge with Our Gas Risers

No matter the application, A.Y. McDonald has the perfect natural gas or propane riser for the job. From before-meter to backyard installations, our risers deliver reliable performance and peace of mind every time. This video compares the different riser options, along with their applications.



[CLICK HERE](#)

### Blog

## How A.Y. McDonald Ensures a High-Quality Gas Product

A.Y. McDonald ensures high-quality natural gas products through rigorous manufacturing processes and stringent quality control. Precision machining, including CNC and CMM equipment, ensures tight tolerances. Thread and pressure testing, adhering to B16.33 standards, guarantees safety and reliability. Special features, like re-lube valves, enhance product durability and performance.